

The logo for the Asheville Museum of Science (AMOS) features the letters 'A', 'M', and 'S' in a bold, blue, sans-serif font. The letter 'O' is replaced by a circular graphic divided into horizontal bands of color: light blue at the top, yellow, green, and orange at the bottom. To the right of the logo is a red circle containing a white atomic symbol with a central nucleus and three orbiting electrons. To the left are two wavy lines, one white and one yellow.

ASHEVILLE MUSEUM OF SCIENCE

43 PATTON AVE. ASHEVILLE NC, 28801 |  
(828) 254-7162 | ASHEVILLESCIENCE.ORG


A circular icon with a white background, featuring a green magnifying glass over a green leaf. The background of the page has a blue circular area with diagonal lines on the left side.

# SUMMER OF SCIENCE CAMPS


A circular icon with a blue background, featuring a white line drawing of a microscope. The background of the page has a blue circular area with diagonal lines on the right side.

*Summer Camp 2022 Guide*

**NINE WEEKS OF FUN-FILLED,  
EDUCATIONAL AND EXPERIENTIAL  
ADVENTURES THIS SUMMER  
SEASON.**

A circular icon with a red background, featuring a white line drawing of a DNA double helix. The background of the page has a red circular area with diagonal lines on the bottom left.

The Asheville Museum of Science (AMOS) is Western North Carolina's home for experiential science learning, discovery, and exploration. AMOS strives to spark the imagination and foster lifelong curiosity.

A white triangle pointing to the right, located in the bottom right corner of the page.

# About Summer Science Camps at AMOS



## WHY CHOOSE AMOS THIS SUMMER?

The informal learning that happens at our AMOS Camps makes concrete, measurable contributions to student success, not only in the classroom environment, but in broader measures of youth development, maturity, and career success. Each thematic day is filled with expert-designed STEAM programming to contribute to our campers' interest in and understanding of concepts ranging from computer programming to chemistry.

# Camps-at-a-Glance



**June 13-17**

**STEM It Up!**

**June 20-24**

**Natural Explorers**

**June 27 - July 1**

**Blast Off!**

**July 5-8**

**Weather Wonders**

**July 11-15**

**K-2: Junior Paleontologists  
3-5: Backyard Biologists**

**July 18-22**

**K-2: Engineering Earth  
3-5: Let's Get Digital!**

**July 25-29**

**K-2: Let's Get Digital!  
3-5: Engineering Earth**

**August 1-5**

**Inventor's Workshop**

**August 8-12**

**Science of Art**

# Camp Themes



## STEM IT UP!

Campers in this session will dive right into the world of STEAM (science, technology, engineering, art, math). During the week, campers will engage and experience a variety of STEAM activities in each of the specific topics.



## NATURAL EXPLORERS

The natural world around us is amazing and campers this week will explore the wonders of nature. Student naturalists will build their own mini terrariums, dissect flowers, and explore the unique species diversity of the Appalachian rainforest.



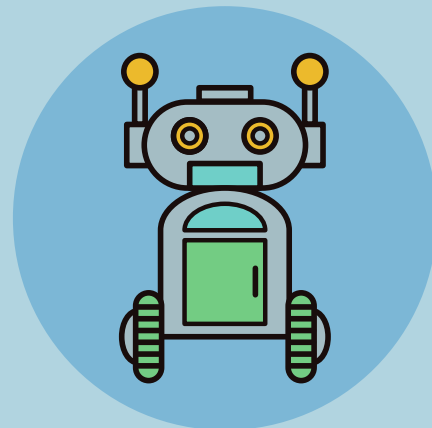
## BLAST OFF!

Up, up and away! Campers will be traveling into space and exploring the stars, planets, the Sun and so much more! Using AMOS's portable planetarium, projection systems and other "spaced out" activities, campers will take a trip that is truly 'out of this world'!



## WEATHER WONDERS

This summer's forecast is sunny with a high chance of science and fun! Young meteorologists will explore the patterns in our atmosphere and hydrosphere, learn about local climates, and create their own devices to collect data at home.



## LET'S GET DIGITAL

Campers will learn to "program" their way to fun! Discover the world of technology through LEGO robots, coding, and other programming activities. Campers indulge in using their own as well as others' ideas to design and create!



# Camp Themes



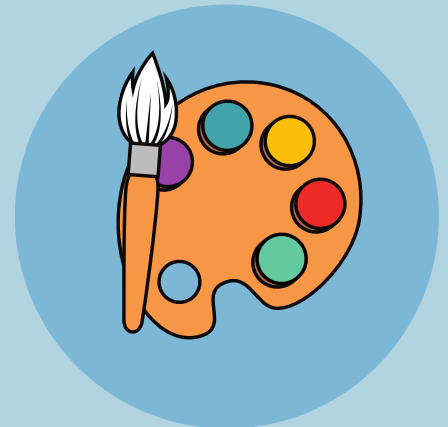
## ENGINEERING EARTH

To this day, our Earth continues to change due to natural phenomenon such as weather and the movement of tectonic plates. Campers this week will not only dive into the science behind our world as it is now, but will also tap into their engineering and design skills to build their vision of the planet's future.



## INVENTOR'S WORKSHOP

Every great invention once started with an idea. In the Inventor's Workshop, campers will first learn about the great inventors of history and their methods of imagining and making. Then, campers will have the opportunity to tinker, build, and create to bring their ideas to life!



## SCIENCE OF ART

There's a science to art and an art to science. By exploring different mediums, color theory, and design technology, campers will tap into their creative side through hands-on experiments and creations.



## JUNIOR PALEONTOLOGISTS

**\*\*RISING K-2 ONLY\*\***

Long ago, Earth was very different than it is today. Our campers will travel back to a time when dinosaurs roamed our planet. Through various activities revolving around ancient animals and fossils, campers will learn what Earth was like a long, long time ago!



## BACKYARD BIOLOGISTS

**\*\*RISING 3-5 ONLY\*\***

Life is all around us and comes in many different shapes and sizes! Through hands-on experiments and experiences, campers this week will learn about the biggest macro-organisms down to the smallest microorganisms.

# Registration Information



## **YOUNG EXPLORERS (RISING K - 2ND)**

**When:** 9am - 1pm; 1pm- 5pm; OR 9am- 5pm

**Where:** Asheville Museum of Science

**Pricing:** \$150 Half-day / \$300 Full-day

## **STEM LEADERS (RISING 3RD - 5TH)**

**When:** 9am - 1pm; 1pm- 5pm; OR 9am- 5pm

**Where:** UNC Asheville

**Pricing:** \$150 Half-day / \$300 Full-day



**Registration is available NOW at:**  
**[ashevillescience.org/education/  
2022-summer-camp](https://ashevillescience.org/education/2022-summer-camp)**

For questions and inquiries regarding Summer Camp, please contact the Education Department at (828) 254-7162 or [camps@ashevillescience.org](mailto:camps@ashevillescience.org).

# COVID-19 Safety

## **LIMITED CAMP SIZES**

Our camps will be capped at a smaller capacity to allow for proper social distancing.

## **MASKS OR FACE COVERINGS ARE REQUIRED**

AMOS will continue to follow recommendations for masking set forth by the CDC and guidance from the National Association of Camps.

## **SOCIAL DISTANCING**

Each camp will be housed in its own dedicated space to allow for social distancing and to limit contact with those outside of the camp.

## **HAND WASHING + HAND SANITIZER**

There will be a hand sanitizing station in each classroom. Campers will also be required to wash their hands throughout the day.

## **CLEANING PRACTICES**

The museum, classroom spaces, and materials are frequently sanitized throughout the day by staff and volunteers.

**Safety protocols may be subject to change in response to public health guidelines and best practices.**